

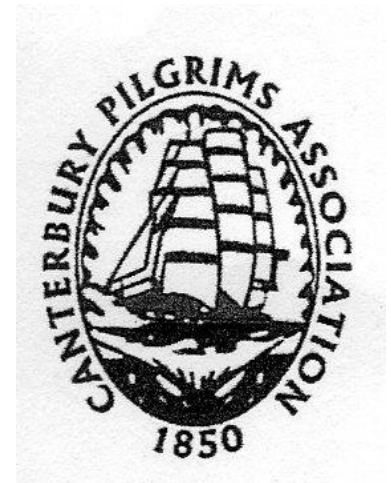
# PILGRIMS PRESS

Official Newsletter for Canterbury  
Pilgrims & Early Settlers  
Association Inc.

Post: C/- 52 Quaifes Road  
Halswell  
Christchurch 8025

Web Page: [www.canterburypilgrims.nz](http://www.canterburypilgrims.nz)

Facebook : Canterbury Pilgrims& Early Settlers



## February 2022

### Meetings and Outings

Unless otherwise notified meetings and outings are held on the third Sunday of each month, with meetings being held at Knights Stream School, 1 Killarney Road Halswell.

### 2022 Meeting and Outing Dates

February 20	March 20	<b>AGM</b>
April 24	May 15	June 19
July 17	August 21	September 18
October 16	November 20	December 16

This Pilgrims Press is printed for **February and March**

Contributions need to be received early for inclusion in upcoming issues.

# CANTERBURY PILGRIMS & EARLY SETTLERS ASSOC INC

## BOARD OF TRUSTEES

<b>Patron</b>	Arthur Northcote	03 923 2202
<b>President</b>	Beverley Bolland email: <a href="mailto:bcbolland@gmail.com">bcbolland@gmail.com</a>	021 023 00841
<b>Vice President</b>	Patsy Wardell	027 4438 465
<b>Secretary</b>	Linda McFarlane email: linda.mcfarlane@xtra.co.nz cell phone: 027 331 4972	03 322 5201
<b>Treasurer</b>	Annette Gibson	027 221 5010
<b>Committee</b>	Elizabeth Dixon Brian Dixon Andrea King Judy Pethig	03 312 5705 03 312 5705 03 383 5488 03 354 8352
<b>Auditor</b>	Mr Victor Sykes (C.A Ret'd)	

### Canterbury Museum Trust Board 3 Year term Representative

Beverley Bolland

### Committee Meetings

Generally the committee meets directly after each meeting in Knights Stream School, Halswell, or on the following Thursday morning after an outing.

### Bank Account

BNZ 020800-0183140-00 for all transactions.

#### DISCLAIMER

The opinions expressed in any letters or articles in this newsletter are the authors own and are not necessarily those of the Canterbury Pilgrims & Early Settlers Association Inc or the Editor

## Presidents Message



Dear Members,

I hope you have all had a good break over the Christmas period and are now ready for this eventful year. We do require everyone to have a vaccine pass this year to be able to attend our outings and meetings and you will be asked to show proof, as well as wear a mask where appropriate, while we are under this Covid traffic light system. For now this is our new normal.

This year at our AGM we will be asking you to vote about our membership fee. With the effect of Covid on the world of business and banking, our bank investments aren't returning much in the way of interest as you will see in the financial statements at the March AGM, plus, a regular subscription of \$20. is pretty paltry these days . We thought an increase of \$5. You have time to think about it in the meantime, as any increase, if approved, won't take effect till 2023.

Don't forget your **2022 sub is now due.**

It is \$20 if you get the newsletter by email **or** \$30 if you have it posted to you. Prompt payment helps us to run more efficiently. No one likes chasing up tardy payers but it is unfair on those who do pay promptly, to carry those who don't.

Have you seen the latest Canterbury Museum Blog? It is well worth subscribing to, it's free, (you won't be inundated with messages) comes about once a month. I was really taken this month with William Cooper a surveyor of 'West Canterbury' around 1865 who made sketches and watercolours to illustrate his surveys and maps of what is now the West Coast. I thought they were delightful and the small figures, ships etc keep it all in perspective.

I would also like to thank those who contacted me about the article in the last newsletter on the Addington Sale yards. It's nice to get some feedback and to hear that at least in one members lifetime she could recall the Wharanui School closing its gates on Sale Day to prevent wandering stock from coming through the school. Just shows one of the many changes that have happened in this city over a current lifetime.

I'm looking forward to seeing you all again. Kindest Regards, Beverley

**February 20**  
**'Waitahuna'**  
**1 Main Road**  
**Governors Bay**  
**1.30pm**



**Please note the earlier time!**

Gavin Bain has agreed to allow us to visit his home 'Waitahuna' this month, a real privilege, so our fingers are crossed for fine weather. We are each welcome to bring our own picnic afternoon tea to have outside as the garden and harbour views are fabulous.

'Waitahuna' has established grounds of over 1.8 hectares and is home to one of the oldest fruit orchards in Canterbury, still producing medlars, quinces, walnuts and Perry pears. As well as a massive Wellingtonian tree that was shipped out as a seedling from Kew Gardens for early settlers John Dyer's wedding in 1853.

Gavin also has some additional information on the history of 'Waitahuna' that he is preparing so it will be an interesting afternoon and not to be missed. Make sure you have it marked off in your calendar!

Please allow some extra time for parking, we don't know what effect Covid will have on the red traffic light system currently in operation. Remember to bring your **vaccine pass** and **wear a mask!**

Notice of meeting.

## **NINETYEIGHTH ANNUAL GENERAL MEETING**

**20 March 2022**

The President and Committee invite members to enjoy an afternoon tea with us.

### **AGENDA :**

1. Notice of meeting
2. Welcome
3. Apologies
4. In Remembrance
5. Minutes of the last Annual General Meeting held on 21 March 2021
6. Matters Arising
7. Correspondence
8. Presentation and Adoption of Presidents Report
9. Presentation and Adoption of Museum Report
10. Presentation and Adoption of the Statement of Accounts and Balance Sheet for the year ended December 31st 2021
11. Election of Officers and Committee
12. Nomination of Auditor
13. General Business
14. Any other Matters

**20th MARCH. AGM  
Knight Stream School  
1 Killarney Road  
Halswell  
2pm**

This is your opportunity to come along and have your say on the running of the Association and to suggest changes if you wish. You **are** the Association, so please come. The general committee are all willing to stand again.

**We do need a Treasurer** again, Annette our Treasurer has, unfortunately for us, family commitments that are unavoidable at the moment. These things happen, so who is able to put their hand up and contribute to the smooth running of the Association? We can't operate without a Treasurer, everything is running smoothly, so can you help out?

With more of you on email we have decided again to email all those financial members a copy of our audited accounts prior to the AMG for your perusal. It worked well last year and it gives you an opportunity to digest the figures at ease and reduces our costs at the same time. There will still be available some printed copies at the AGM, and of course our accounts are filed with the Registrar of Inc Societies just the same as always.

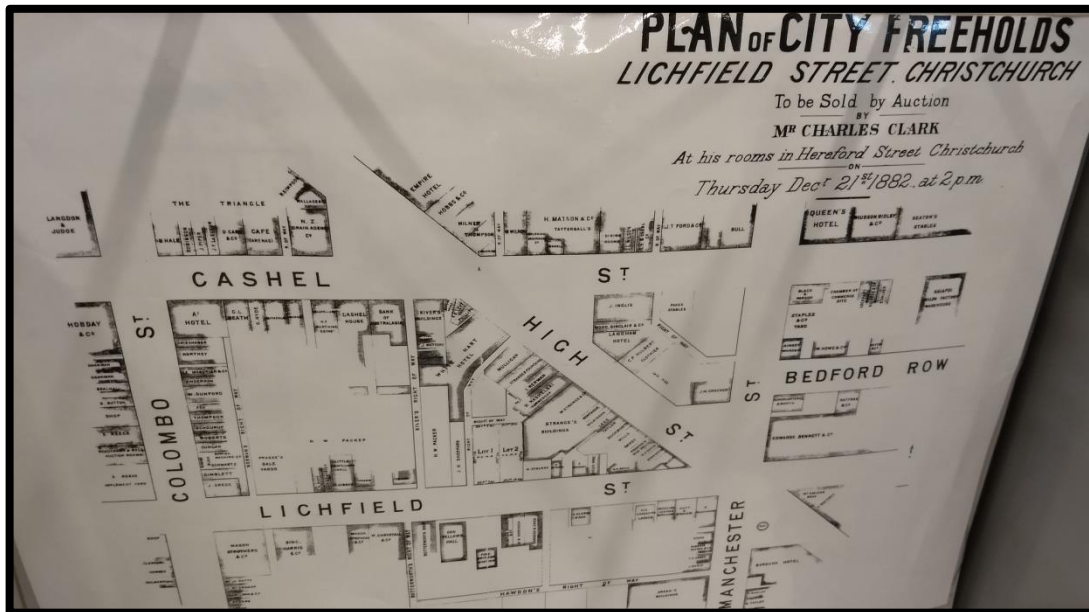
We thought this year we ask you to bring your oldest photograph for a sort of 'show and tell' before afternoon tea. Do you have one of where your ancestors lived here in New Zealand perhaps, or early Christchurch? How many of you remember the time in Cathedral Square, when your parents and grandparents got dressed up to go to town, all very smart in their hat and for the women gloves, and were photographed by the photographer who always seemed to 'lurk' in front of the Cathedral?

He must have done a roaring trade, it was very popular at a time when photography wasn't easily available to the ordinary working man.

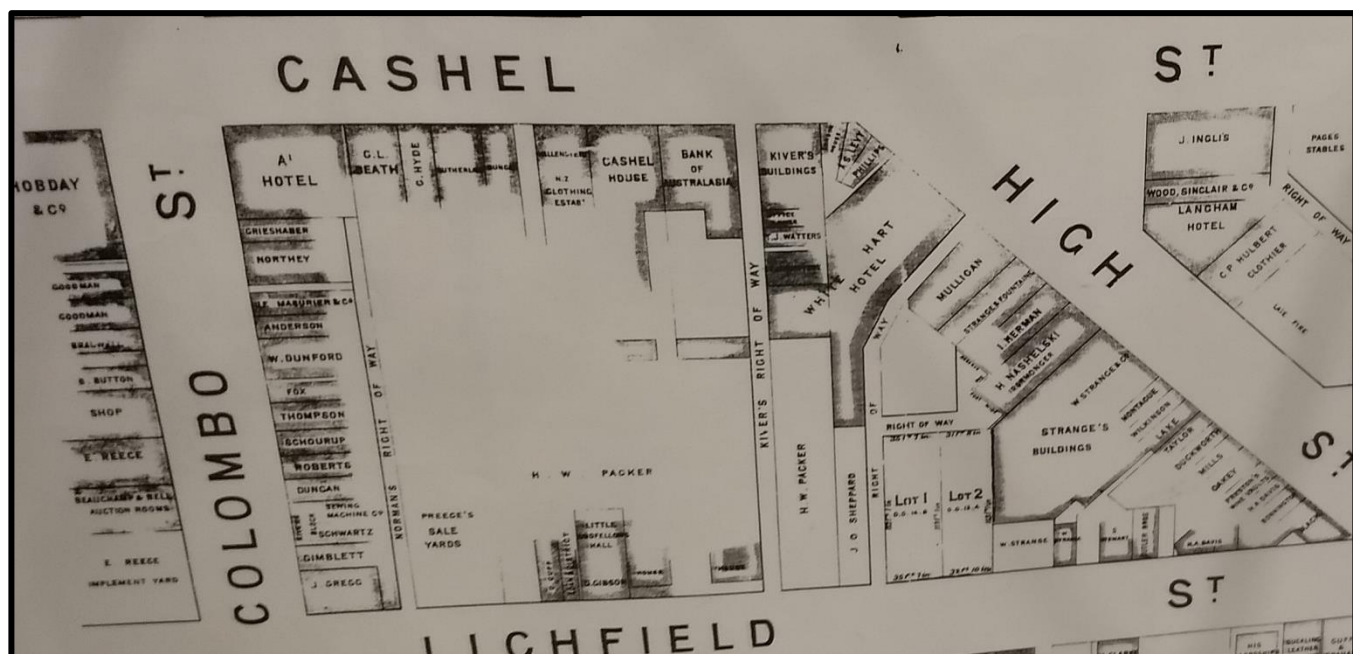
Remember to bring your **vaccine pass** and **wear a mask**. This is especially important as we meet in a school.

# Central Christchurch 1882

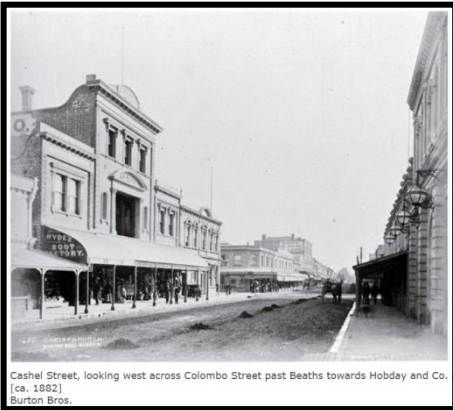
I came across this map in the Library that was of the centre of Christchurch. Much to my joy it included names of the business and some of the names of some of those who held freehold land, up for Auction in 1882. I found it fascinating. A lot of those names are familiar still, especially their businesses. Some have disappeared entirely of course and since the earthquakes even greater changes have been made. However if you are of *a certain vintage*, you will remember some of them.



On the corner of Colombo and Cashel we have the A1 Hotel, and opposite is Hobday & Co. a clothing store. Hobdays burnt down in 1888, the fire leaping across Colombo Street to catch and burn the upper part of the A1 Hotel on the opposite corner. The front of the Hotel building was severely scorched, the front



window broken and a good deal of damage done to the furniture etc in the rooms. Ballantynes was further along Cashel Street in Dunstable House. The solid brick dividing wall saving it from the fire. Hobday & Co 's whole of the corner portion



Cashel Street, looking west across Colombo Street past Beaths towards Hobday and Co. (ca. 1892) Burton Bros.

of the building collapsed, causing complete destruction of the building, very little was saved. There was, as reported in the newspaper *a brisk breeze blowing from the North West* .(some things never change) The buildings were very old

Next to the A1 Hotel in Cashel Street was Beaths, that's a familiar name to me. Oscar Kirby opened his shop Kirby's as a menswear and drapery there in 1860. Later in 1866 taking in partnership George Low Beath. After

Kirby's death in 1868, it became known as Beaths. By 1896 it had become one of the largest department stores in NZ. 1987 saw it merged with Arthur Barnett and rebranded as D.I.C./Arthur Barnett.



Hallensteins appears, on the map as a NZ Clothing Establishment. Founded in 1873 by Bendix Hallenstein. Not in the Triangle corner, that was in 1920's, but opposite in Cashel Street, next to Cashel House. There is the Bank of Australasia and almost on the corner of High and Cashel the Kiver Building with a right of

way next to it. Charles Kiver owned this building, he had a bakery and grocery store there. Just around the corner in High Street we have the White Hart Hotel. This was owned by Michael Hart who pitched a tent in 1851 on this site which then became a wooden building with stables, becoming the White Hart Hotel around 1863. In this picture you can still see the deer on the rooftop. It is said to have been the first Hotel in Christchurch. Almost mid way down High street there is the large Stranges buildings. The original building on this site for William Strange was a small weatherboard drapery store around 1863. He went on to expand with greater buildings in the area.

Can you add any other information to the names on the map? *Beverley*